

# COMPLETE A SCRIPT!

Given below is the first page of a script. Use the details to complete the script and act out the play for your friends and family.

**Title:** The Magic Garden

**Characters:**

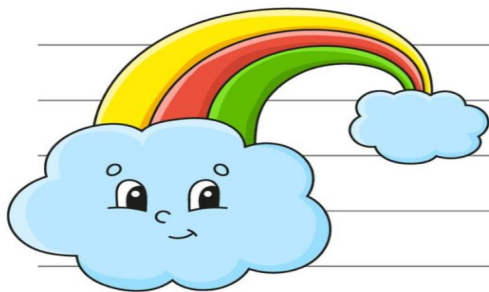
Sarah, a young ten-year-old girl

Tom, Sarah's brother, eleven years old

**Setting:** A beautiful garden with flowers, trees, and a small pond.

**Act 1, Scene 1:**

*(Scene opens with Sarah and Tom walking towards the garden. They are excited to explore the garden and see what new plants have bloomed.)*



**SARAH:** *(pointing at something with astonishment)*  
Wow! What's that? That wasn't there before!



NAME \_\_\_\_\_

Handwriting practice area with 20 horizontal lines and a colorful border at the top and bottom.

