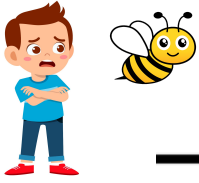


# Get Away from the Bee

Connect each word away to get through the maze.



A maze puzzle where the goal is to connect the word "away" to get from the start to the end. The maze is composed of several paths and dead ends, with the word "away" written in various orientations (horizontal, vertical, and upside down) throughout. Other words like "be", "best", "because", "between", "below", "am", and "before" are also present, serving as distractors. The start is at the top left, and the end is at the bottom right.

